

# WEEDS (PLANTS OUT OF PLACE)

## PURSLANE

low growing



- ✓ Edible, loaded with nutrients
- ✓ Easy to pull by hand
- ✗ Grows anywhere, tolerates drought

## BROADLEAF PLANTAIN

small & bunched



- ✓ Medicinal, used to treat wounds in many cultures
- ✗ Produces 20k seeds per plant
- ✗ Survives mowing

## YELLOW WOOD SORREL

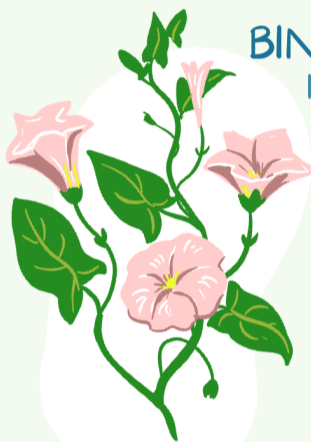
small, clover like



- ✓ Attractive to small bees, birds & mammals like seed heads
- ✗ Found in lawns
- ✗ Can form dense mats

## BINDWEED

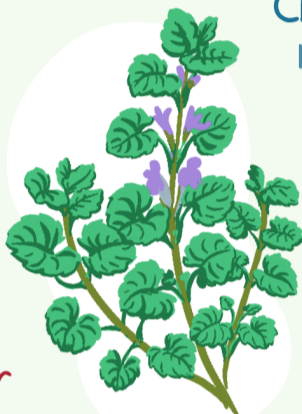
long creeper



- ✗ Noxious weed
- ✗ Once established, difficult to fully remove
- ✗ Outcompetes other plants

## CREEPING CHARLIE

low growing



- ✓ Pollinator favorite
- ✓ Medicinal benefits
- ✗ Highly aggressive
- ✗ Steals nutrients from turfgrass

## BIRDSFOOT TREFOIL

small



- ✓ Fixes nitrogen in the soil
- ✓ Pollinator food source
- ✓ Can be used for foraging
- ✗ Thrives in poor soil

## COMMON BURDOCK

tall, huge leaves



- ✓ Root contains antioxidants & is medicinal
- ✗ Shades out native plants
- ✗ Establishes easily, hard to remove, aggressive

## LAMBSQUARTERS

medium to tall



- ✓ Easy to remove
- ✓ Edible, contains more iron, vitamins B & C than spinach
- ✗ Re-seeds, produces over 70k seeds per plant

## RAGWEED

medium to tall



- ✓ Medicinal benefits
- ✓ Beneficial to pollinators, birds, & mammals
- ✗ Highly allergenic
- ✗ Aggressive spreader

## CHICKWEED

tall



- ✓ Great for chickens
- ✓ Beneficial to pollinators
- ✗ Self-seeding
- ✗ Spreads quickly

## GARLIC MUSTARD

tall



- ✗ Highly invasive
- ✗ Thrives in disturbed soils
- ✗ Allelopathic, kills off other plants

## CREEPING BELLFLOWER

tall



- ✗ Invasive
- ✗ Repeated removal necessary
- ✗ Resistant to many herbicides

## CANADIAN THISTLE

very tall



- ✗ Invasive
- ✗ Can destroy habitat
- ✗ Spreads by seeds & even small root pieces