

APRIL

National Gardening Month

S

M

T

W

T

F

S

30

31

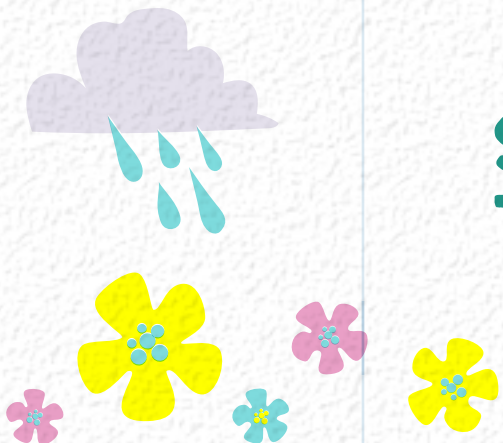
APRIL FOOLS 1

2

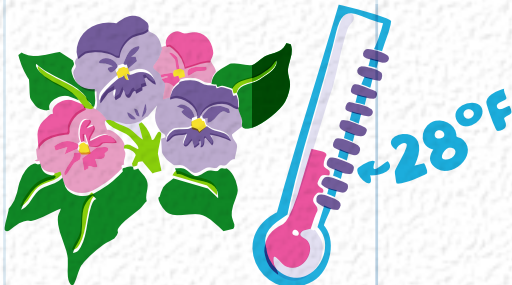
3

4

5



SPRING INTO THE GARDEN:



Pansies and violas tolerate temps down to 28 degrees.



Plant pansies, violas, and cool weather annuals in containers.

6

7

8

9

10

11

12

SEEDS & SHOWERS:



Start broccoli, cabbage, and cauliflower.

NEW IN THE GREENHOUSE:



Indoor plants are fully stocked. New arrivals weekly!

13

14

15

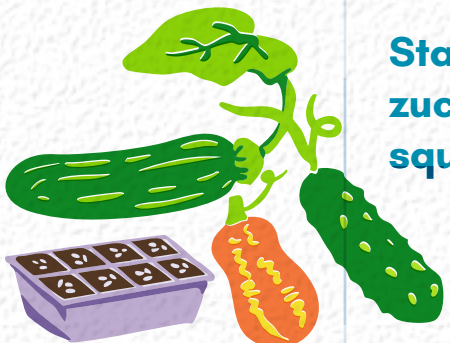
16

17

18

19

INTERNATIONAL PLANT APPRECIATION DAY



Start cucumbers, zucchini, and squash indoors.

GROWING GREENER:



Plan to plant early spring bloomers for the pollinators.

(Visit <https://tonkdale.com/earllyspringcolor> for a few ideas to choose from.)

Tropical plants – mandevilla, jasmine, hibiscus, and alocasia arrive.



20

21

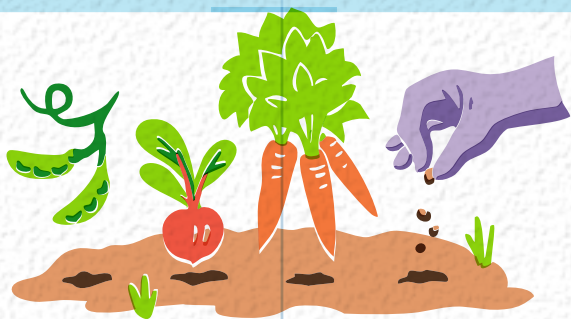
EARTH DAY 22

23

24

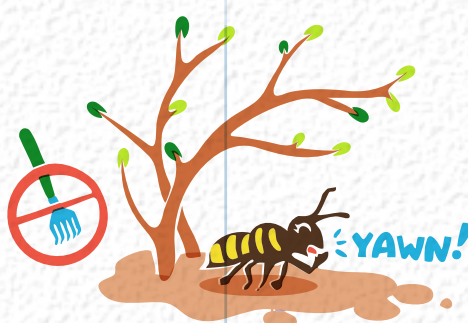
ARBOR DAY 25

26



Direct sow carrots, beets, radishes, and peas in the garden.

Wait to clean up the garden until day-time temps reach 50 degrees.



Pollinators are still waking up!



Perennials start rolling in!

27

28

29

30

1

2

3



Plant potatoes and onions when the soil is tillable, and the ground has warmed.



tonkdale
YOUR GREENHOUSE HOME